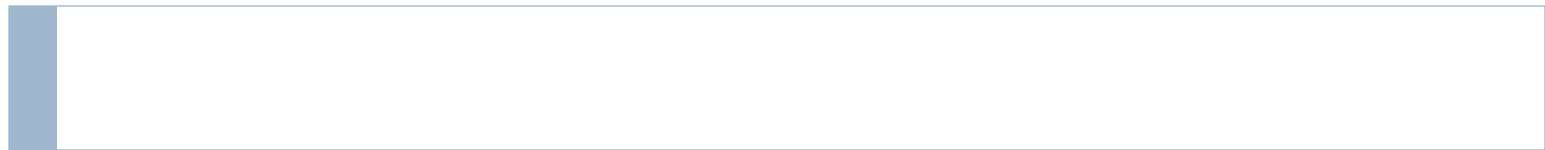
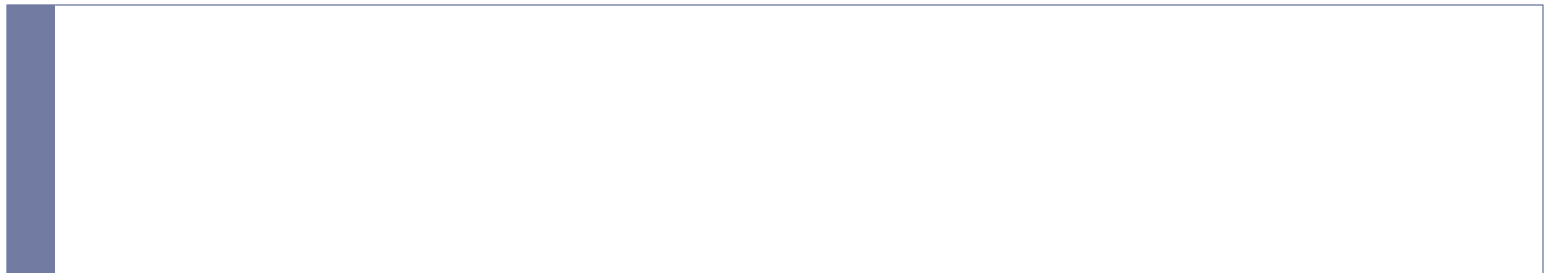


West County College Access Network &  
West Contra Costa Out of School Time  
Collaborative  
JOINT MEETING  
9/18/14



# Agenda

---

- ▶ Welcome & Networking
- ▶ Collaborative Overviews & Accomplishments
- ▶ Visioning & Planning
  
- ▶ OST/WCCAN Breakout Time



# Goals of Today's Meeting

---

- ▶ Gain a deeper understanding of collaborative groups work.
- ▶ Begin to explore our shared values and vision for our community.
- ▶ Review 2014-2015 collaborative work plans



# Welcome

---

- ▶ Structured Networking/Icebreaker



# WCCAN

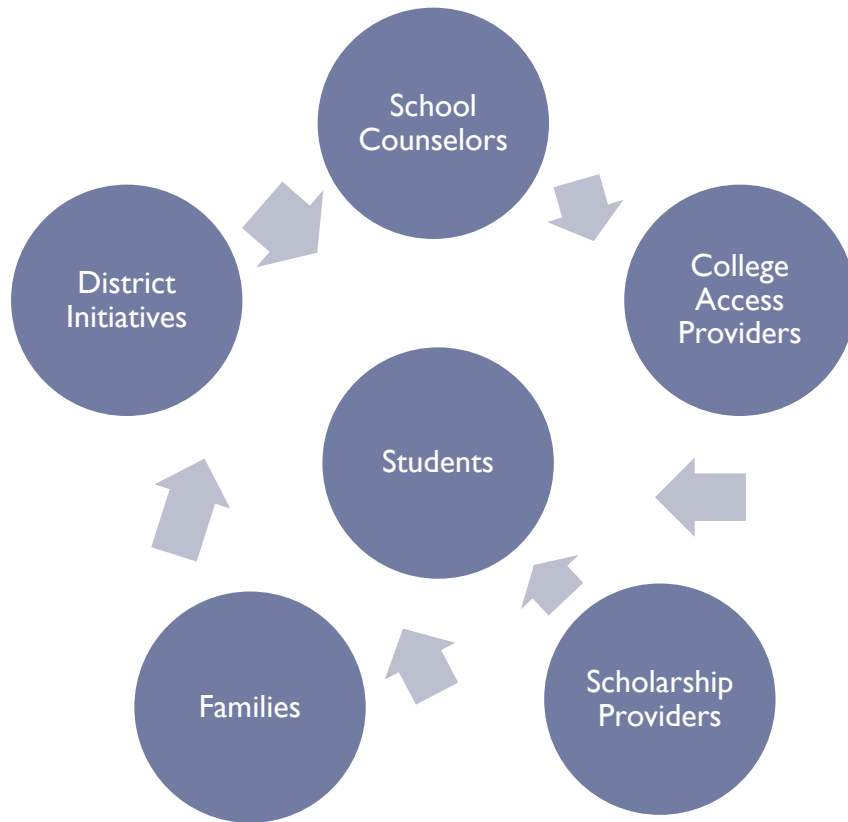
---

- ▶ Launched in October 2011
- ▶ Mission: To secure college access and success for all students and families in West Contra Costa Unified School District.
- ▶ Initial strands of work:
  - ▶ Connect students & families to resources
  - ▶ Align to district strategies
  - ▶ Build capacity of membership



# A Need for Connection

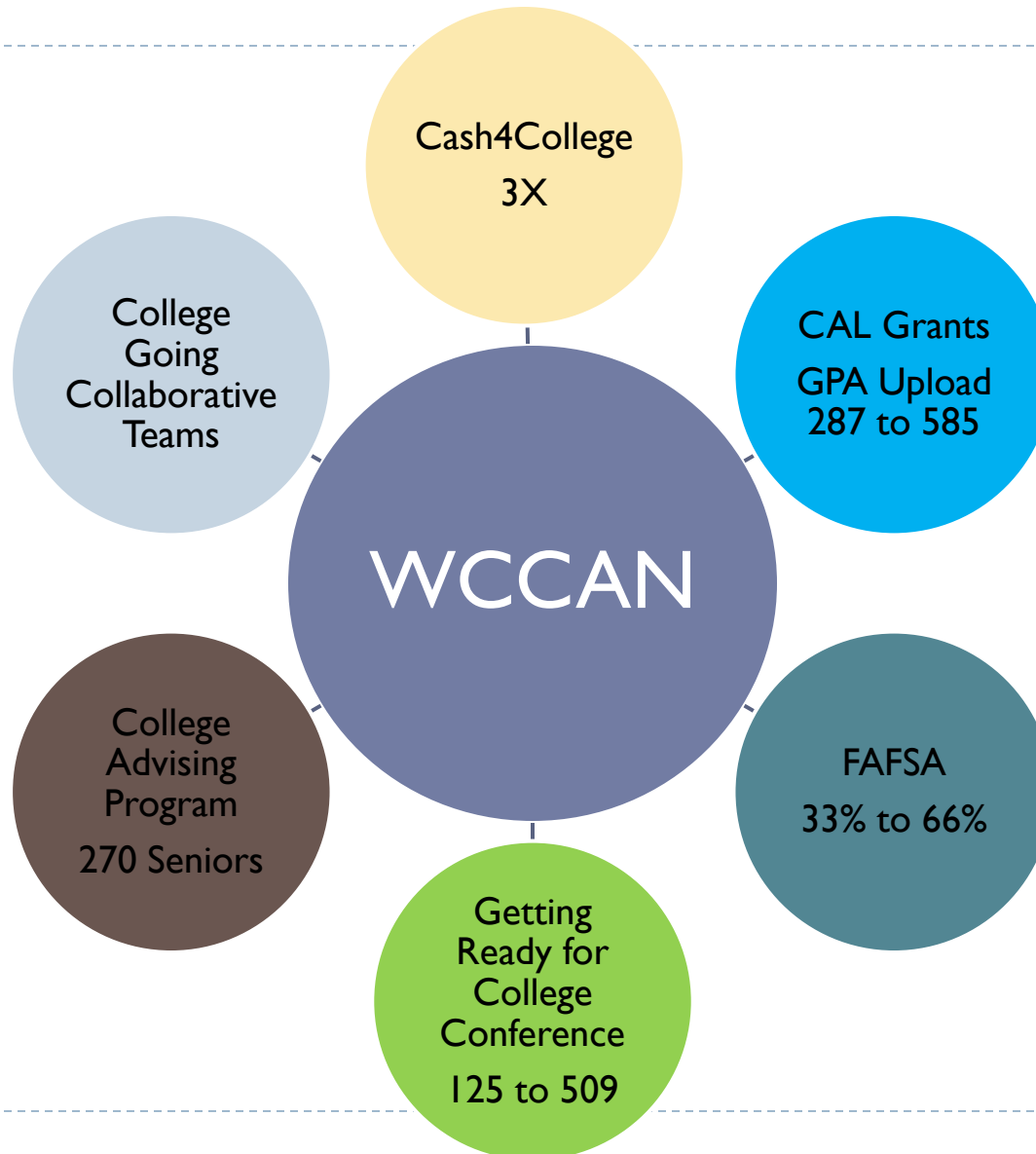
---



- ▶ A primary goal in forming the WCCAN was to create partnership between support providers within schools and the WCCUSD to improve the flow of services & information to students and their families.

# WCCAN Accomplishments

---



# College-going Collaborative Teams

---

## ▶ High School Based Teams

- ▶ College Access Providers
- ▶ Counselors
- ▶ Linked Learning Teacher
- ▶ CBO's
- ▶ Administrator
- ▶ Ed Fund

## ▶ Goals

- ▶ Collaboration
- ▶ Coordinate College-going calendar
- ▶ Financial Aid Campaign
- ▶ Targeted Student Outreach





# West Contra Costa Out of School Time Collaborative Accomplishments

---

- ▶ Launched January 2012
- ▶ Mission: To increase access to high quality OST program that empower, educate, and inspire West Contra Costa children and youth.
- ▶ Initial focus of work:
  - ▶ Quality Campaign
  - ▶ Get Your Summer On Campaign



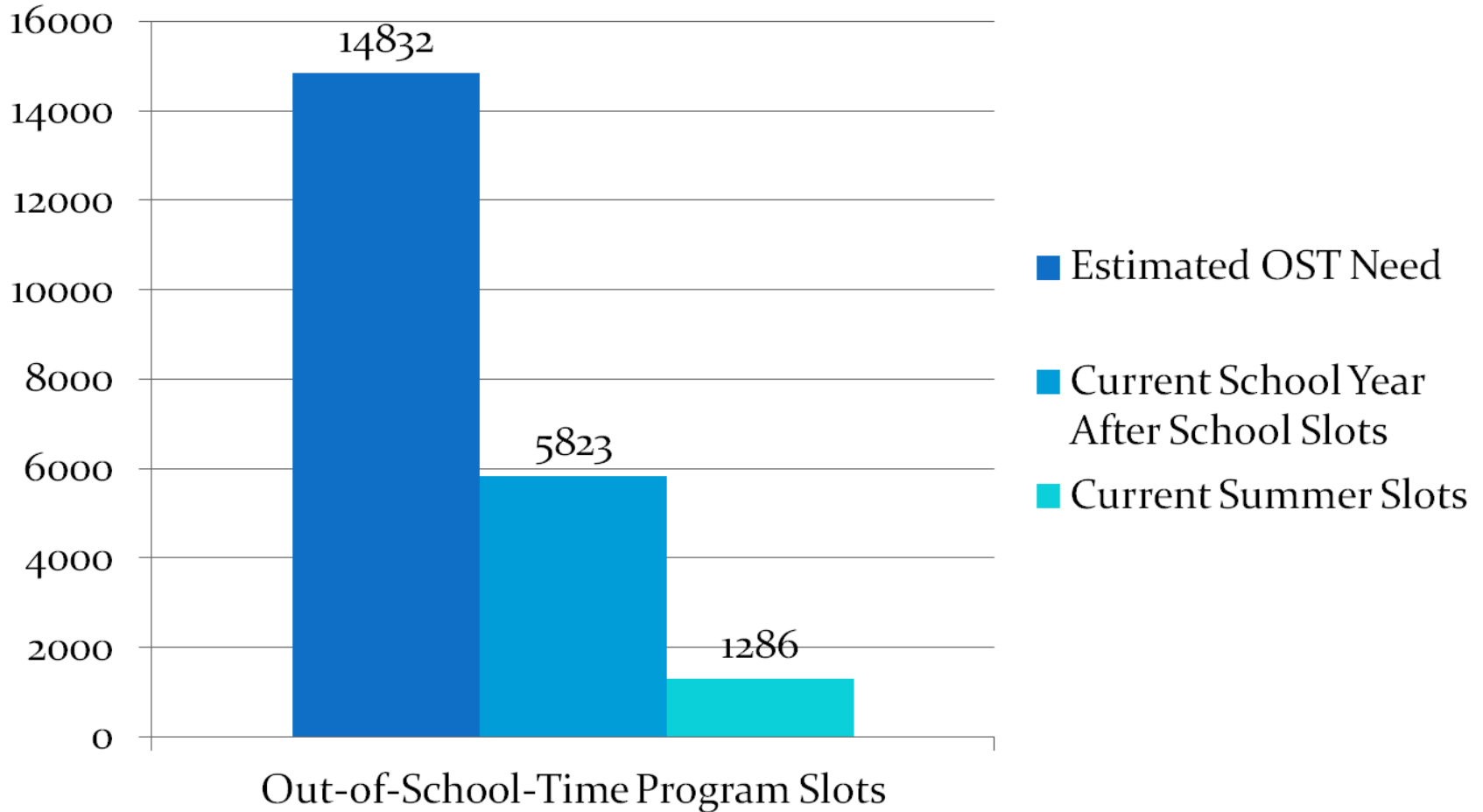
# OST Initiative Background

---

- ▶ During Spring 2011, the West Contra Costa Public Education Fund (The Ed Fund) undertook a **data collection process** to summarize information about available West County after school and summer services and identify key gaps.
- ▶ The goal of this project was to document Out-of-School time opportunities for West County children and youth and to provide recommendations about next steps to address identified needs.



# West Contra Costa Need versus Current Capacity



# Quality Roadmap

---



COMMITMENT TO QUALITY because quality programs are likeliest to benefit children and therefore scarce OST funding should be directed to delivering high-quality programming.



WCCOST Collaborative and its Partner Organizations adopt COMMUNITY-WIDE QUALITY STANDARDS

Programs embrace a CONTINUOUS CYCLE OF IMPROVEMENT and utilize tools to reflect on practice

"COMMITMENT TO QUALITY" SEALS & "Prime Time" System MODEL OF SUPPORT

## WEST CONTRA COSTA OUT-OF-SCHOOL TIME QUALITY STANDARDS

Commitment to Providing High Quality Experiences for West County Students

*Our mission is to increase access to high quality  
Out-of-School Time programs that inspire, empower and educate  
West Contra Costa children and youth.*

### 1. ACTIVE AND ENGAGED LEARNING

Programming and activities are developmentally appropriate and promote the physical, academic, social, and emotional development of all participants. Programs provide a positive environment that integrates best practices of youth development and support student creativity. Opportunities for play and fun are promoted.

### 2. SKILL BUILDING

The program intentionally provides opportunities for students to build skills that support their success in academic, health, social-emotional, and other key areas of their lives. Academic programming enhances student's school day learning.

### 3. SAFE ENVIRONMENT

Physical and emotional safety is a key foundational element of programs. The program provides a safe and supportive environment that addresses the developmental, physical and emotional needs of diverse participants.

### 4. COMMUNITY RESPONSIVENESS

The program culture reflects respect and celebrates diversity. The program is accessible and responsive to the needs of the community it serves.

### 5. STAFFING AND PROFESSIONAL DEVELOPMENT

The program employs and supports the professional growth of highly effective staff and volunteers who are dedicated to creating a positive, developmentally appropriate and supportive learning environment.

### 6. LEADERSHIP AND MANAGEMENT

The program displays effective leadership, sound fiscal management, and coherent policies and procedures.

### 7. CONTINUOUS IMPROVEMENT

The program adopts a systematic approach of assessment, reflection, and action planning to continuously improve the quality of the program.

### 8. MEANINGFUL PARTNERSHIPS

The program values collaboration and purposefully builds strong partnerships in order to achieve program goals.

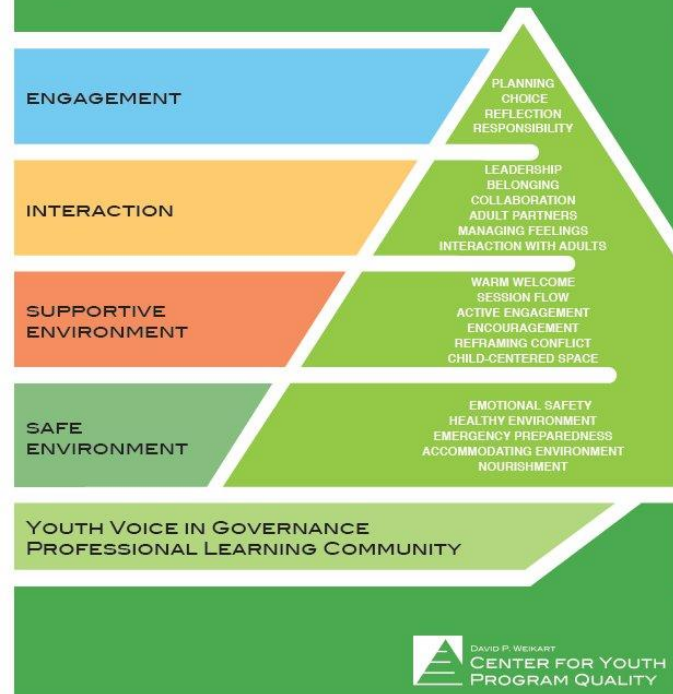


[www.edfundwest.org.what-we-do/OST](http://www.edfundwest.org.what-we-do/OST)



## YOUTH & SCHOOL-AGE PQA PROGRAM QUALITY ASSESSMENT

# pyramid of program quality



# Get Your Summer On Campaign



# Congratulations!

---

- ▶ All within 2 years!
- ▶ Partnerships & Friendships



# Values Activity

---

▶ Activity Here





# WCCUSD Mission

---

WCCUSD, in partnership with the community, services the whole child, empowering every student to succeed in higher education, career, and life by pairing high quality academics with social, emotional, and wellness support.

## **Student success is the ultimate priority**

The purpose of public education is to develop well-informed, intellectually and emotionally capable students, equipped with the skills and knowledge to be successful, happy, and productive members of society. All students, regardless of racial, ethnic or socio-economic background, should receive comparable skill development to be in a position to determine their life trajectory.

---

# BREAK



# Looking Ahead

---

## Multi-Year Planning

**COMMITTED LEADERSHIP** – including top political, school, community and OST leaders, to secure funding and other resources and shape policies;

**A PUBLIC OR PRIVATE COORDINATING ENTITY** – to manage the development of plans, link disparate OST players, build citywide attention and support for OST, and ensure that plans and performance stay on track;

**MULTI-YEAR PLANNING** – to set goals and priorities, develop ways to hold key players accountable for results and identify necessary resources;

**RELIABLE INFORMATION** – to document the needs and wishes of parents and children, track participation and identify underserved neighborhoods and families;

**EXPANDING PARTICIPATION** – to reach more children and ensure that they attend often enough to benefit; and

**A COMMITMENT TO QUALITY** – because quality programs are likeliest to benefit children and therefore scarce OST funding should be directed to delivering high-quality programming.



# Questions?

---

- ▶ Is there other collaborative group work currently underway in West County that aligns with the OST/WCCAN values?
- ▶ Are there other initiatives or organizations you know working on youth issues that align with OST/WCCAN collaborative work?
- ▶ Are there any new opportunities in West County that could support/expand the work of OST/WCCAN?



## ▶ Say Yes to Education Video



<b>What connections to our collaborative work (OST/WCCAN) did you hear?</b>	<b>What connections to other initiatives/collaborative groups in West County did you hear?</b>	<b>What opportunities did you hear? What inspired you?</b>



# West County Partnerships & Opportunities

---

WCCUSD	Cities	Colleges/Universities	Collaborative Efforts	Elections
Strategic Plan	Richmond Promise	Hispanic Serving Institution Grant	WCCAN	Congress
LCAP	RHEP/HiaP	East Bay Pathway Consortium	OST	Assembly
Linked Learning	LBNL	Early Admit Program	BBK	School Board
Full Service Community Schools	FSCS	LBNL	3 <sup>rd</sup> Grade Reading	City Council
21st Century Funding	OST Funding	EAOP	Nerve/Spark Point	
			RYSE- Public Funding	
			Healthy Richmond	

# Guiding Questions

---

- ▶ What from the video resonated most with you?
- ▶ In a very political environment, what was the unifying agenda (end goal) that brought together the many factions within Syracuse?
- ▶ 1,2,4,All



# Work plan/Timeline

---

- ▶ **Oct-Feb (5 Meetings)**
  - ▶ Learning & Listening
  - ▶ Data collection
  - ▶ Study models
- ▶ **March-June**
  - ▶ Create vision
  - ▶ Create multi-year work plans



# Next Steps/Calendar

Month	Strategic Planning
September	Introduction
October	Pre-Planning Information Gathering
November	Pre-Planning Information Gathering
December	Pre-Planning Information Gathering
January	Pre-Planning Information Gathering
February	Data Presentation
March	Work Plan Development
April	Work Plan Development
May	Work Plan Development
June	Final Plan Report
August	Report to Stakeholders
September	Work Plans Begin

# Process

---

## 1) Planning Committee

- ▶ Subgroup of both WCCAN/OST
- ▶ Meet between meetings
- ▶ Helps to coordinate process
- ▶ Consultant selection
- ▶ Timeline
- ▶ Scope of work

## 2) Whole Group

- ▶ Planning as part of collaborative meetings
- ▶ OST/WCCAN meetings may be joint w/ break out time
- ▶ Collaborative process

## 3) Hybrid

- ▶ Combination of Committee & Whole Group



# Meeting Evaluation

---

- ▶ Poll Everywhere



# Break Outs

---

- ▶ College Access:
  - Getting Ready for College Conference (GRFCC)
- ▶ Out of School Time: Quality Rollout
- ▶ Next Collaborative Meetings
- ▶ Next Joint Planning Meeting